



*Putaruru Schools'*  
**NETWORK  
LEARNING  
COMMUNITY**

Planning Day - 01 April 2011

**Network Learning Community**

**WELCOME!**

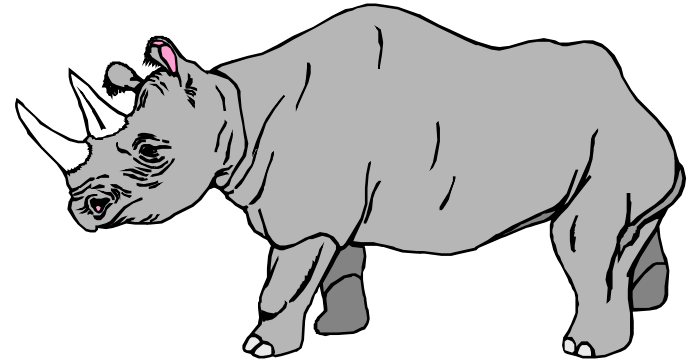
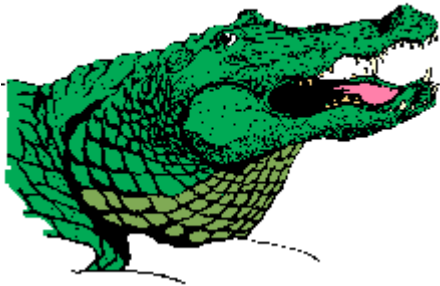
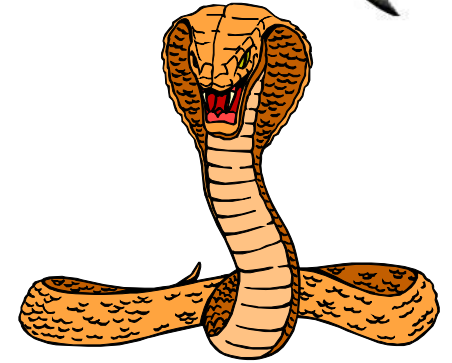
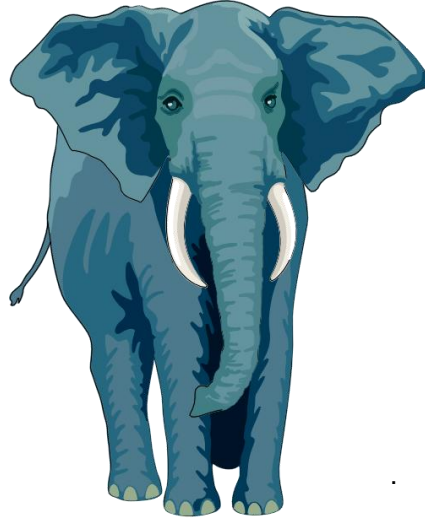
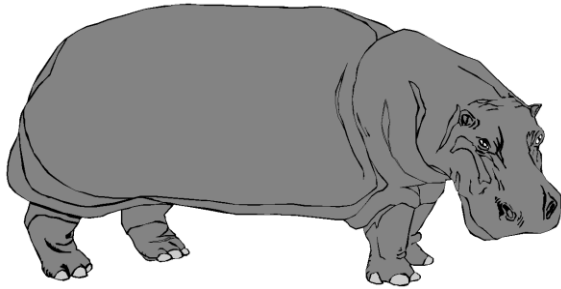


# Network Learning Community

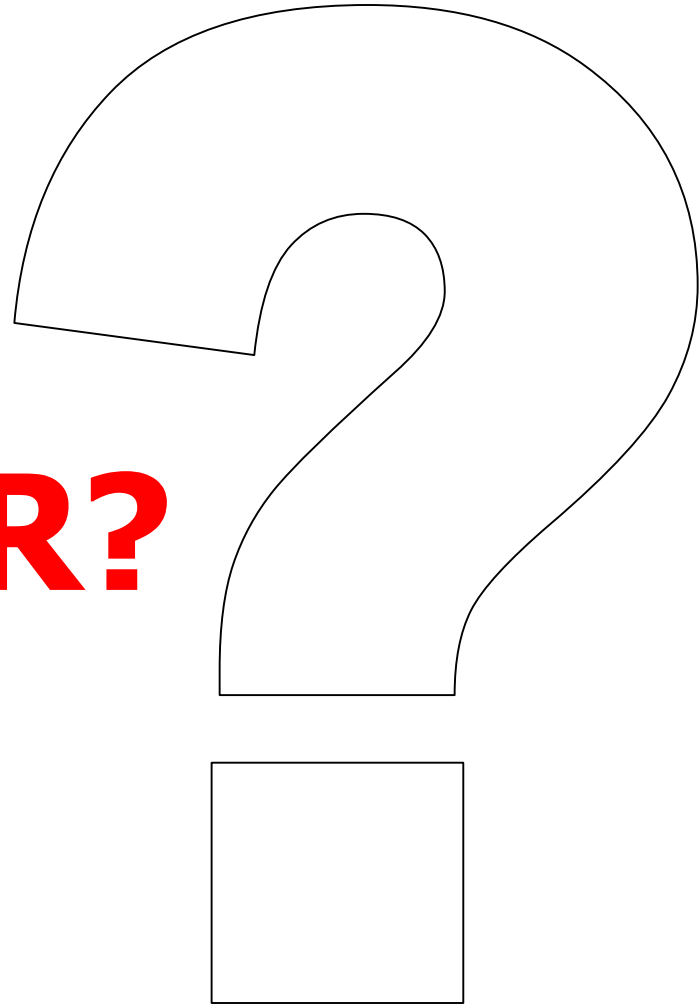
**QUICK  
DO NOW!**



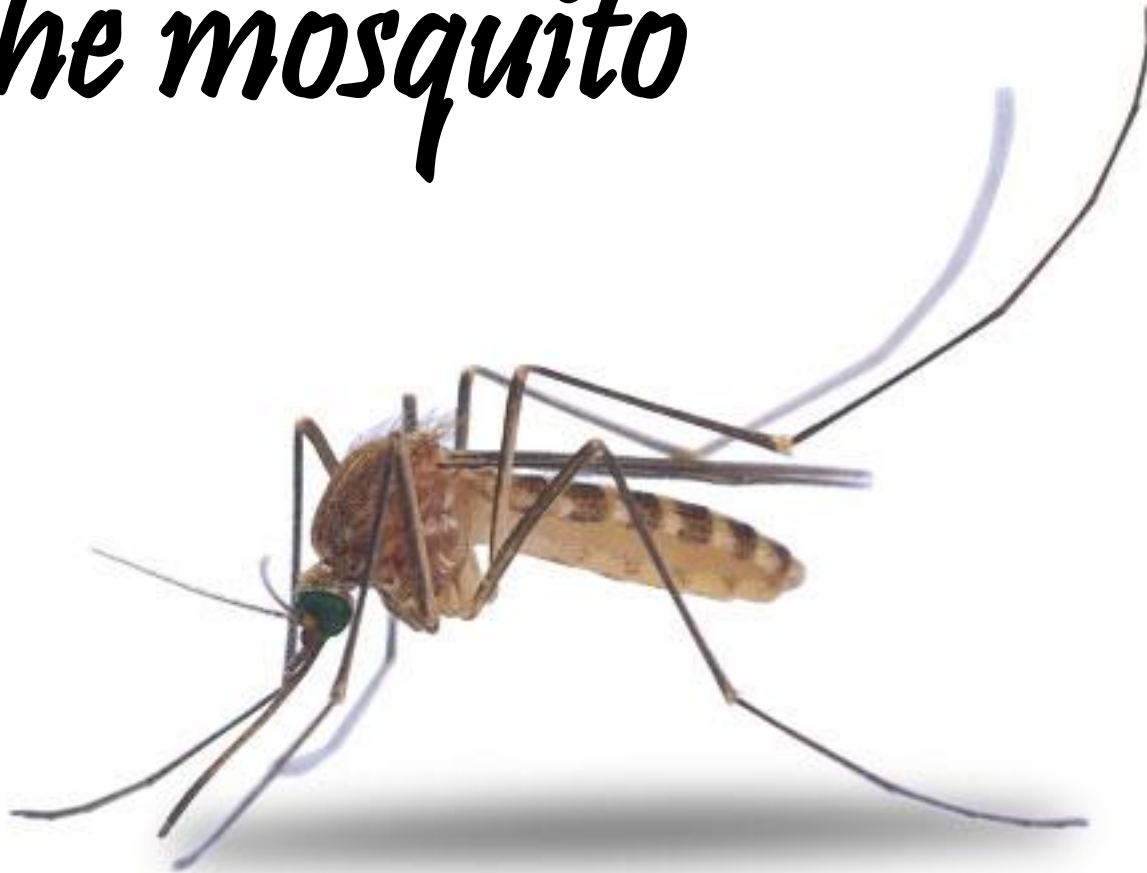
**Which of these animals is responsible for the most deaths per year in Africa?**



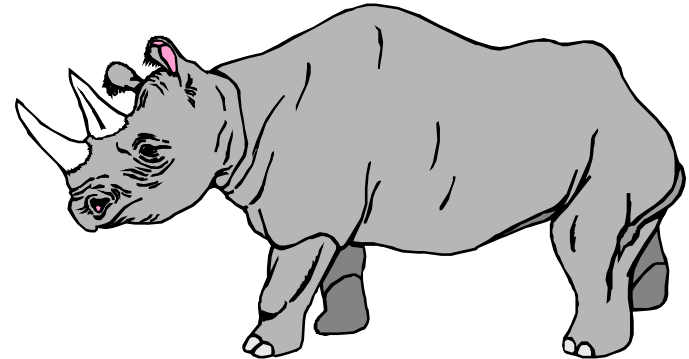
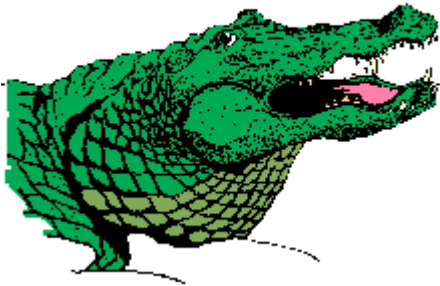
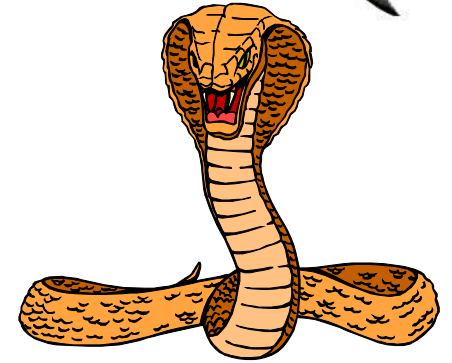
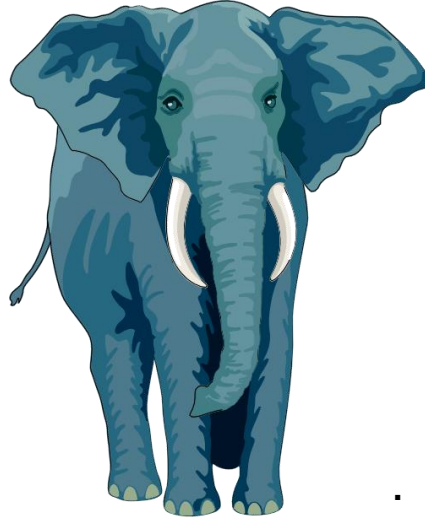
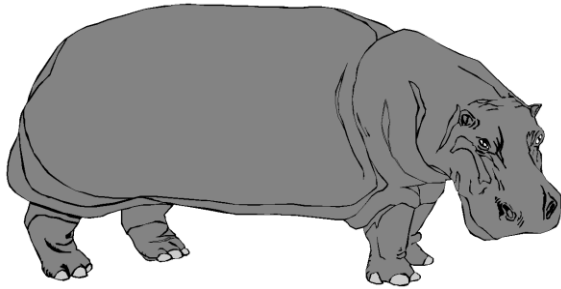
**ANSWER?**



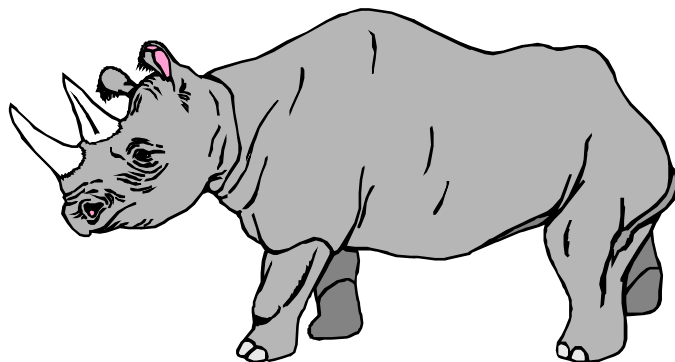
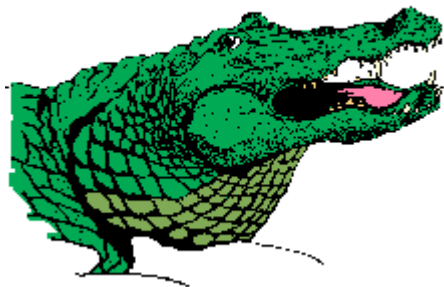
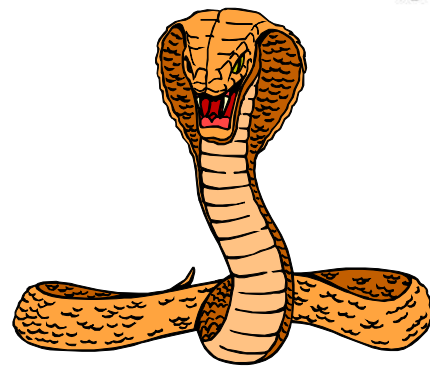
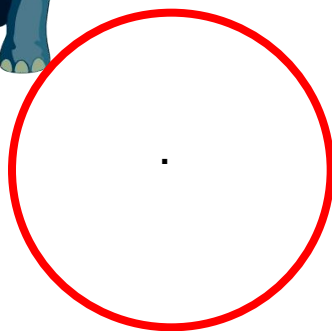
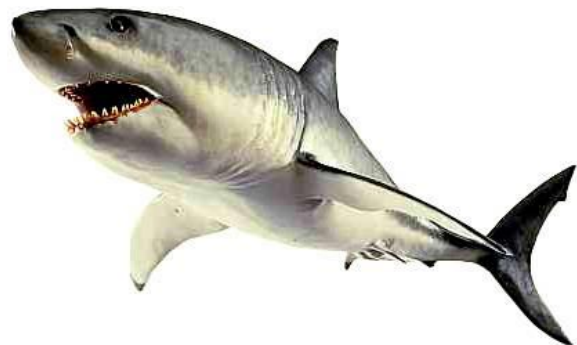
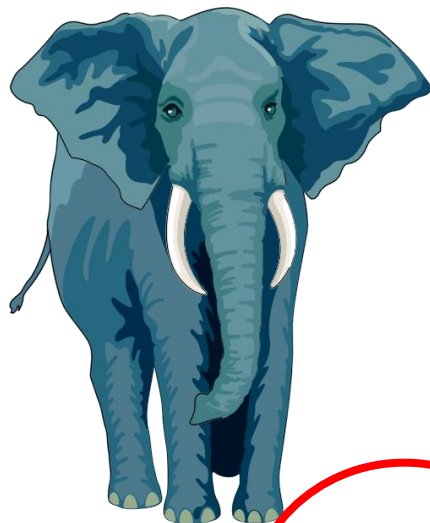
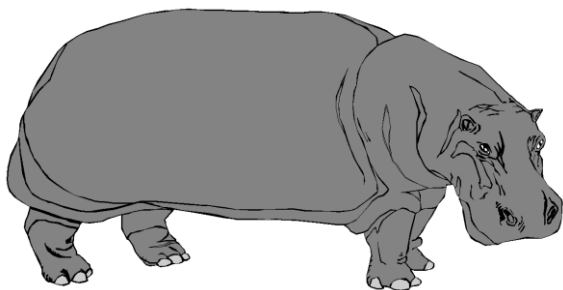
*the mosquito*

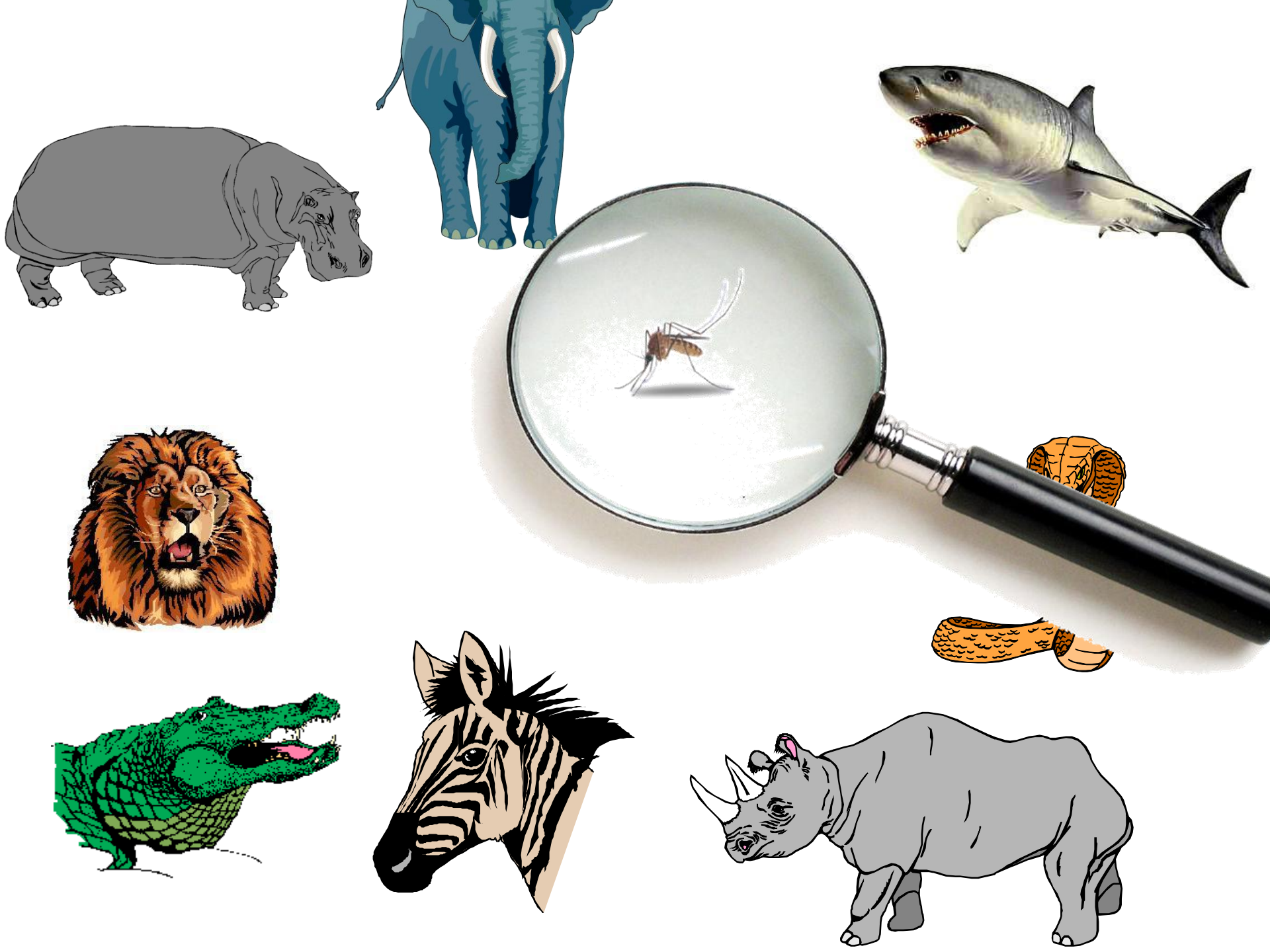


**Which of these animals is responsible for the most deaths per year in Africa?**









# Lessons?



# Lessons?

- Definitive proof that **size** DOESN'T matter!



# Lessons?

- Definitive proof that **size** DOESN'T matter!
- Even when sharing ideas – we don't always get it right!





# Lessons?

- Definitive proof that **size** DOESN'T matter!
- Even when sharing ideas – we don't always get it right!
- It's easy to miss small (but vitally important) things!



# Lessons?

- Definitive proof that **size** DOESN'T matter!
- Even when sharing ideas – we don't always get it right!
- It's easy to miss small (but vitally important) things!
- We're often distracted by big things which aren't necessarily important!



# TODAY'S OBJECTIVES:



# TODAY'S OBJECTIVES:

1. To come to a **shared** understanding of the purpose of the NLC and our own role in it.

# TODAY'S OBJECTIVES:

1. To come to a shared understanding of the purpose of the NLC and our own role in it.
2. To develop our understanding of Technology and our capacity to plan and deliver engaging Technology programmes.

**THE BIG PICTURE**

**NLC**

**THE BIG PICTURE**

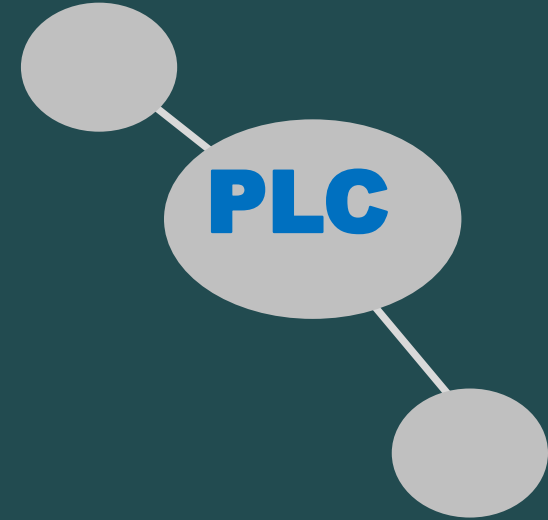
NETWORK  
LEARNING  
COMMUNITY

# NETWORK LEARNING COMMUNITY

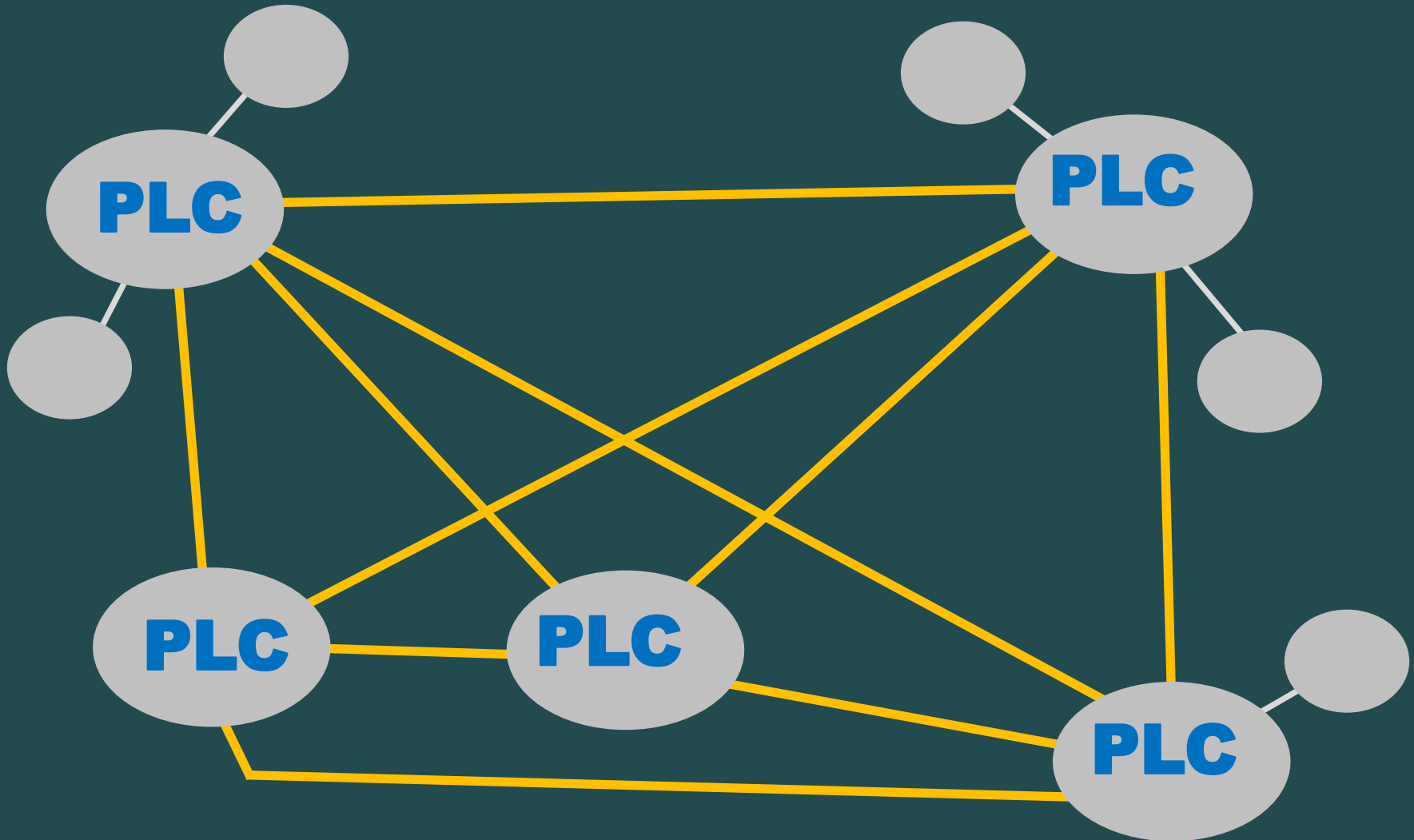
## BIG IDEAS

- Cluster of schools
- Collaborative Inquiry
- Deepened understandings
- Action leading to raised student outcomes

# PROFESSIONAL LEARNING COMMUNITIES



# NETWORK(ED) LEARNING COMMUNITIES



# POSSIBILITIES

## FOCUS ON NZC

- Maori/Pasifika student engagement
- culturally responsive curriculum
- cross-sector transitions
- a particular principle in the NZC
- teaching as inquiry
- school curriculum design
- engagement with families, whanau and wider community
- effective pedagogy
- ???



# POSSIBILITIES

- Maori/Pasifika student engagement
- culturally responsive curriculum
- cross-sector transitions
- a particular principle in the NZC
- teaching as inquiry
- school curriculum design
- engagement with families, whanau and wider community
- effective pedagogy
- ???



# THE BIG QUESTIONS

- How do we engage our parents/whanau/communities?
- How do we forge strong relationships (connections) with our school families / community?
- How do we encourage our students to participate and contribute?

Community



Parents

# **F**OCUS on NZC

**VISION  
PRINCIPLES  
VALUES  
KEY COMPETENCIES**

***2011***

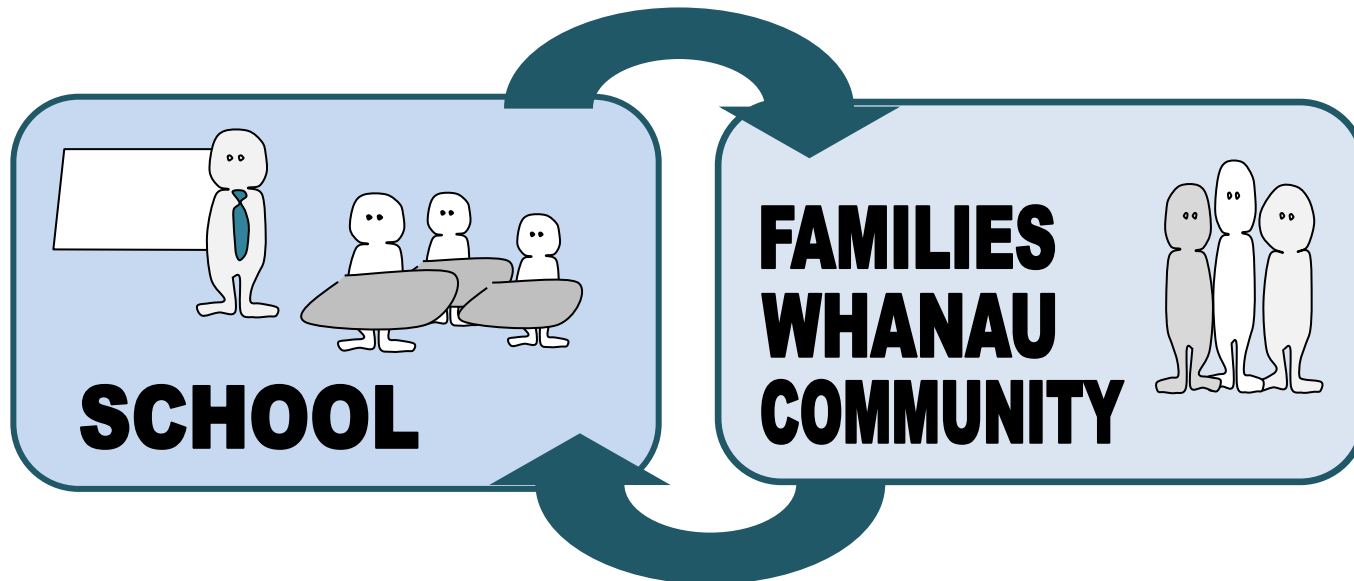
# FOCUS on NZC

VISION  
PRINCIPLES  
VALUES  
KEY COMPETENCIES

2011



Engagement with families, whanau and wider community



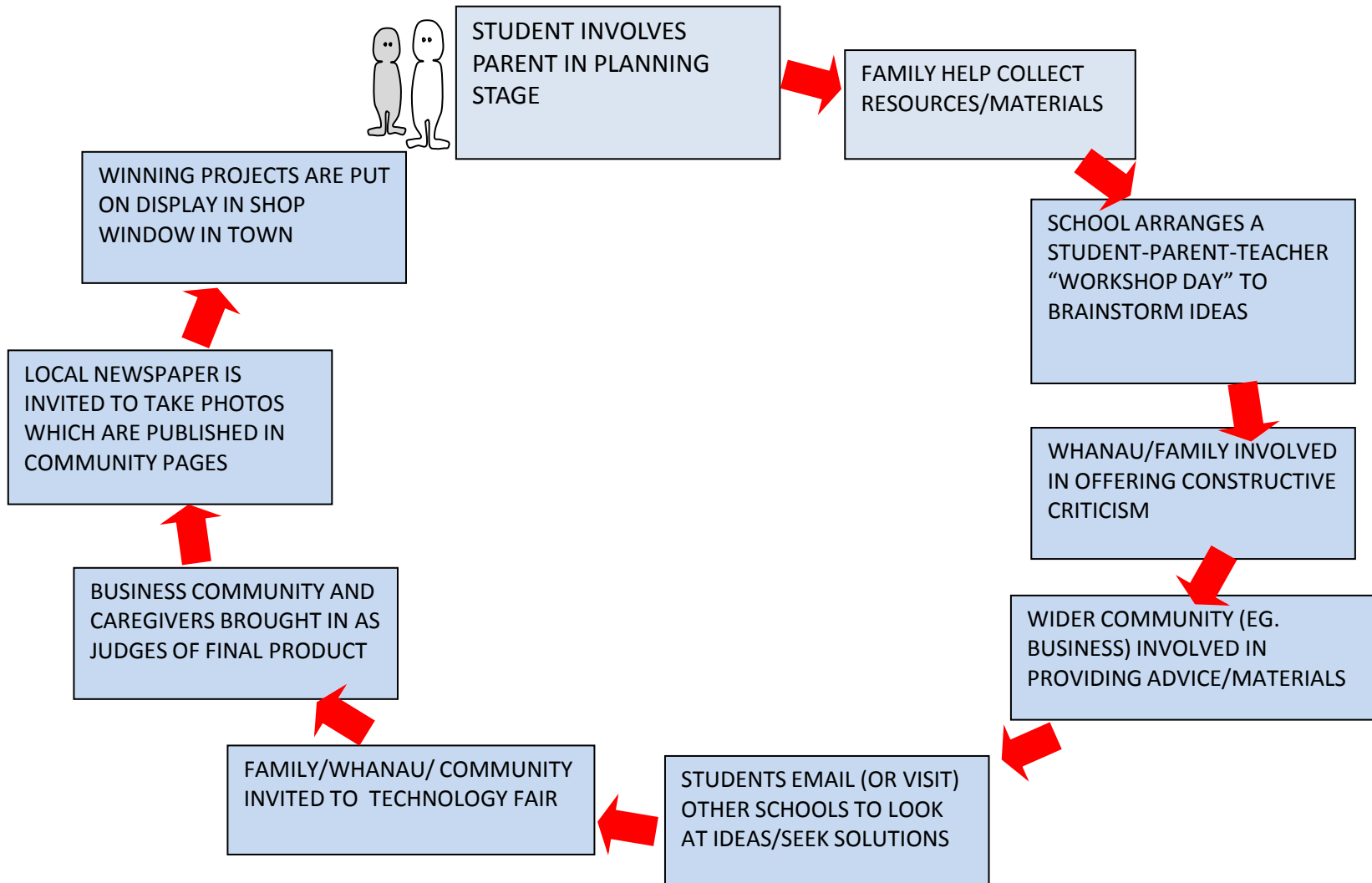
# SO WHY TECHNOLOGY?

# SO WHY TECHNOLOGY?

**EXAMPLE: – STUDENTS BUILD A PROJECT FROM RECYCLED MATERIALS... TO BE DISPLAYED AT A TECHNOLOGY FAIR.**

# SO WHY TECHNOLOGY?

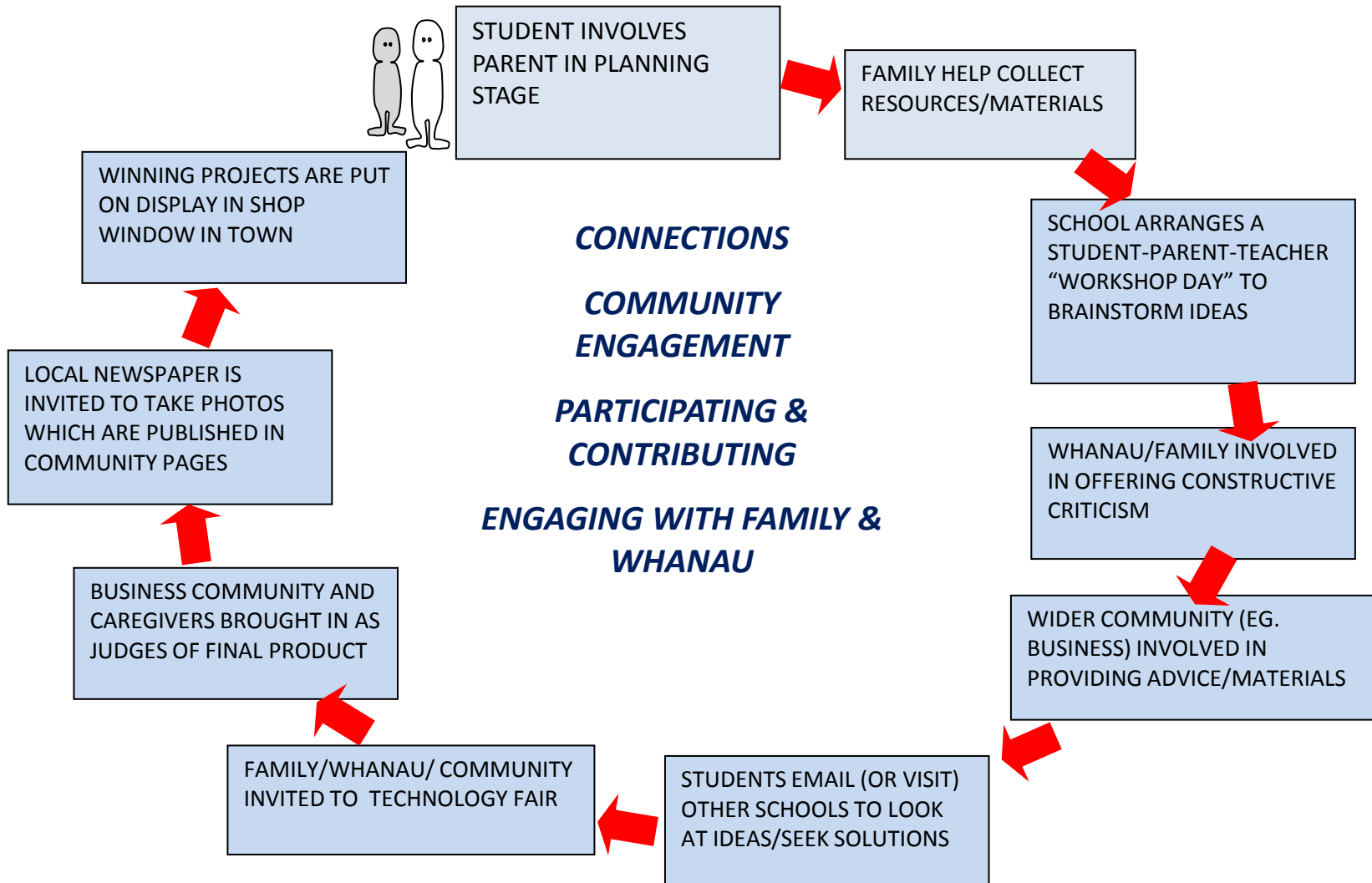
**EXAMPLE: – STUDENTS BUILD A PROJECT FROM RECYCLED MATERIALS... TO BE DISPLAYED AT A TECHNOLOGY FAIR.**



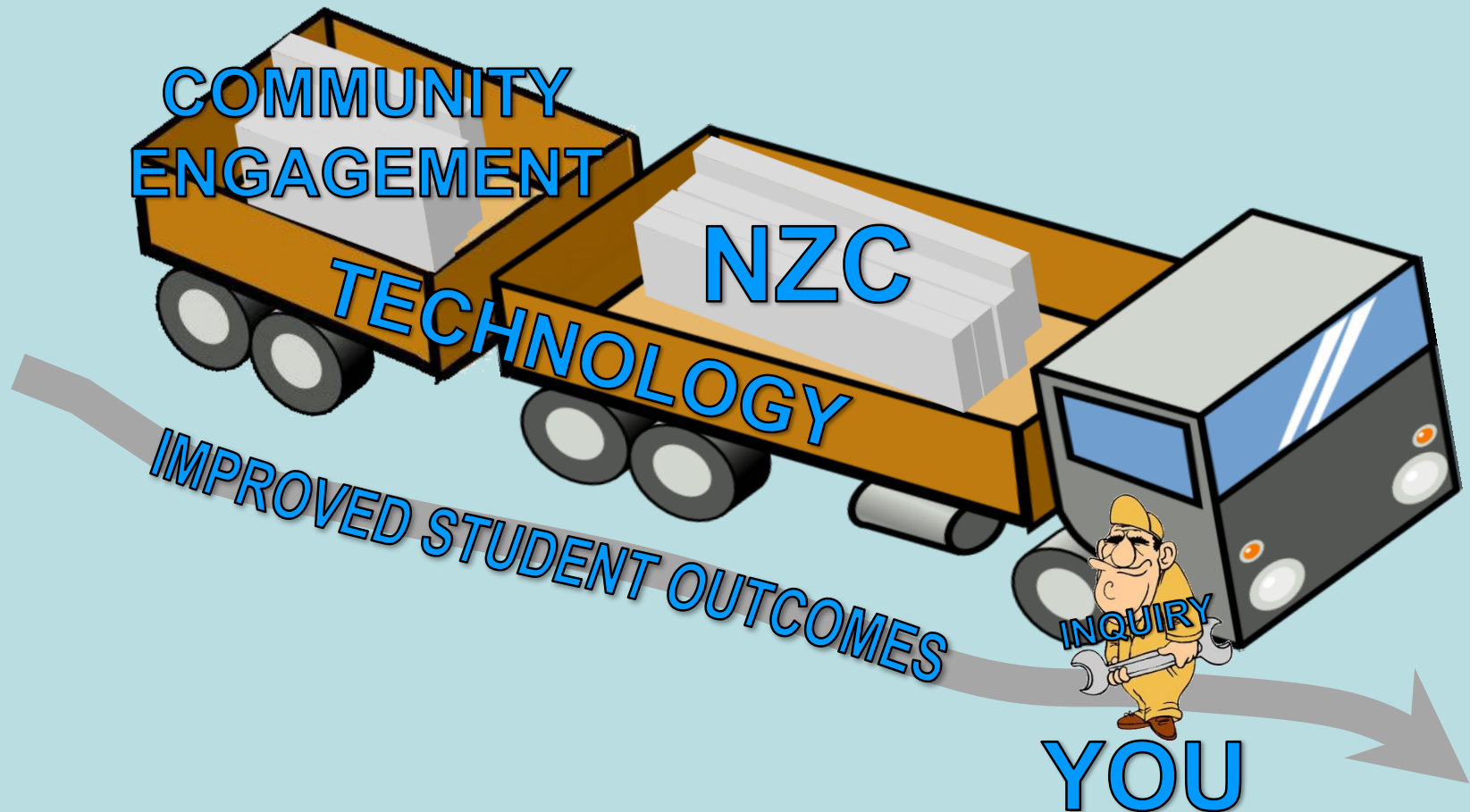


# SO WHY TECHNOLOGY?

EXAMPLE: – STUDENTS BUILD A PROJECT FROM RECYCLED MATERIALS... TO BE DISPLAYED AT A TECHNOLOGY FAIR.



# PUTARURU SCHOOLS' NLC



# POSSIBLE FOCUS:

We want to explore ways in which we can:

- (1) Create stronger connections with our school families



# POSSIBLE FOCUS:

We want to explore ways in which we can:

- (1) Create stronger connections with our school families
- (2) Build on community engagement



# POSSIBLE FOCUS:

We want to explore ways in which we can:

- (1) Create stronger connections with our school families
- (2) Build on community engagement
- (3) Promote & model the value “Community & participation”  
(NZC principle)



# POSSIBLE FOCUS:

We want to explore ways in which we can:

- (1) Create stronger connections with our school families
- (2) Build on community engagement
- (3) Promote & model the value “Community & participation”  
(NZC principle)
- (4) Develop students’ ability to “participate & contribute”



# EXPECTED OUTCOMES:

- (1) To share info/ideas across cluster
- (2) To develop pool of shared resources
- (3) To develop effective tools for evaluation
- (4) to develop effective reflective practice within our schools/NLC



GREATER COMMUNITY ENGAGEMENT



RAISED STUDENT OUTCOMES

